

Smooth



operator

A romantic palette of soft, creamy neutrals converge in this arts and crafts beauty, lovingly refreshed to create a light-filled family home.



This page In the ground floor sitting room, a 'Le Bambole' two-seater sofa by Mario Bellini for B&B Italia with original mustard canvas from 506070, a Luiz Lafer Brazilian rosewood armchair Vampt Vintage Design and 'PK61' coffee table from The Finery Company sit on a Persian Mazandaran flatweave rug from Cadrys. Floor lamp from VBO. Plaster shell plafoniere chandelier in the style of Jean Charles Moreux from The Vault Sydney. **Opposite page** Tumbled Italian cabochon Grigio marble tiles with Nero diamond accents were used throughout the kitchen, dining and open-plan living areas on the lower-ground floor. A Carrara marble benchtop and splashback from Nefiko Marble is complemented by custom hand-painted joinery, rangehood and mottled brass rails, all designed by AP Design House. Sully 'Classic' Lacanche cooker in Racing Green with stainless-steel and brass hardware. Italian four-shade pendant light from Nicholas & Alistair. Perrin & Rowe 'Ionian' bench-mounted kitchen mixer in Polished Nickel from The English Tapware Company. Vintage Thonet bar stool upholstered in 'Candela' linen from Alhambra Fabrics. Ceiling rosette and cornice by Unique Plaster.

Words **MATILDA RINGROSE**
 Photography **RORY GARDINER**
 Styling **JOSEPH GARDNER**



These pages, clockwise from top left In the kitchen hangs a photograph bought at a flea market in Sicily. Vintage kitchenware on mottled brass rails designed by AP Design House continues the theme. Brass wall lamp with custom parchment shade and an artwork sourced from a flea market in Paris hangs between custom arched glazed doors that frame the garden. In the living area, Mario Bellini 'Le Bambole' sofas from 506070 sandwich a Brazilian rosewood bench by Sergio Rodrigues from Vampt Vintage Design serving as a coffee table. 'Daphne Terra' floor lamp in Brushed Silver from Lumina. A piece of a cast iron fireplace by Jean Touret hangs above a stone mantle by Richard Ellis Design. Custom brass grilles from The English Tapware Company conceal airconditioning vents. Timber side table from The Vault Sydney.

Refined, poetic and imbued with an atmosphere of romance, this family home in Mosman, on Sydney's lower north shore, is dripping with historic accents and natural charm that cannot be choreographed or contrived. Through a considered and restrained application of finishes, textiles and colour, interior designer Alexandra Ponting of AP Design House has revealed the beauty of an already elegant home, while bringing it into the present.

When Alexandra was approached to renovate the original structure, a grand arts and crafts Federation home built in 1906, the brief was relatively simple, "polished and traditional, with interest", she explains, "relocating the primary living space to the lower-ground floor while prioritising the connection between the alfresco and the interior and making the most of the natural light and garden views."

and dining area occupying much of the lower-ground floor, spilling out to the deck, pool and garden through two arched doorways. The arch detail was repeated throughout the lower floor, mirroring existing period features and reflecting a desire to respect the original architecture as well as ensuring that all opportunities for natural light were maximised. "The two arched timber and glazed doors out to the deck were custom made in honour of the arts and crafts period," says Alexandra. "They add charm to the space and reflect the original double-arched passage from the dining to central stair on the same level." High on the owner's wishlist was integrated wine storage, which Alexandra neatly tucked between the powder room and laundry, cleverly facilitating easy access to the dining area for seamless entertaining.

In the kitchen the pièce de résistance is a Lacanche cooker in British Racing Green that sits on top of a Grigo and Nero tumbled Italian marble floor. "These floors make the entire lower-ground level come together," says Alexandra, "so strong, grounding, >



This page Looking through to the dining space. A Mario Bellini for Artemide 'Circo' table lamp sits on a timber hallway table. AP Design House brass wall lamps with custom parchment shades. Timber dining table from The Vault Sydney has been paired with Jean Prouvé 'Vitra Standard' dining chairs from Vampt Vintage Design. *Inter-giftedness 5* artwork by Jahne Pasco-White from Station Gallery. **Opposite page** Seen through a double-arched passage, a custom sisal stair runner from International Floorcoverings leads upstairs.



This page In the main bedroom views to the balcony and jacaranda trees in the garden are framed by custom French doors. Art-deco burl tallboy from London's Savoy Hotel from Vampt Vintage Design. Alvar Aalto 'Model 31' armchair from Composition Studio. A wool rug from Anibou sits on roasted peat flooring from Nash Timbers. **Opposite page** The marble-tiled floor creates continuity with the lower levels and extends to the balcony. Tumbled Italian Biancone marble wall tiles. Victoria + Albert 'York' freestanding bath with Perrin & Rowe bath and shower mixer on floor legs in Polished Nickel from The English Tapware Company. Carrara marble benchtop from Nefiko Marble. Door hardware from Noble Elements.

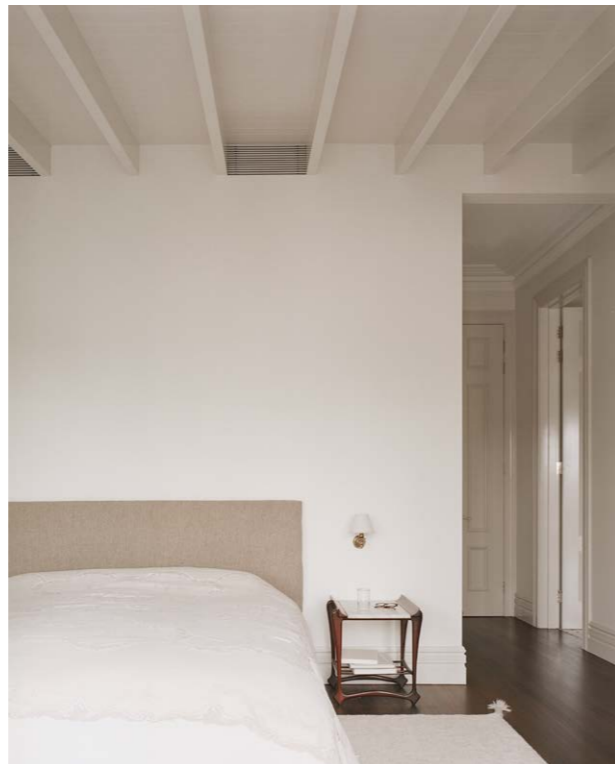


« elegant and timeless. Everything else just floats above them.» This easy elegance of the flooring is continued through the material palette selected for the kitchen. From the Carrara marble bench and splashback to the custom brass rails and meticulous detail in the ceiling rosette and cornice, all gorgeously restrained to achieve an air of quiet luxury throughout.

Upstairs, the neutral palette is carried through to the primary suite, bolstered by timber, brass and linen accents. Here, his-and-hers walk-in robes were essential, as the owners both work in the fashion industry and required ample storage for a treasure trove of clothing and shoes. A slim balcony with views to the pool and garden framed through custom French doors connects the bedroom to the ensuite. Alexandra repeated a smaller variation of the tumbled marble tiles she used in the kitchen, while the freestanding bath is perfectly perched to take advantage of the leafy outlook.

At every moment of this renovation Alexandra has celebrated the details, respecting the character of the home by introducing subtle nods to the past with vintage furniture sourced locally and abroad, all the while lending her signature blend of craftsmanship and timeless elements. 15

apdesignhouse.com.au; hamptonarchitecture.com.au



SPEED READ

» Alexandra Ponting, interior designer and founder of AP Design House, was engaged to transform a grand arts and crafts Federation home to better suit the owners, a family with two young children. » Through a careful curation of finishes, textiles and colour the home's original character was maintained and architectural nuances were highlighted. » Extra attention was given to his-and-hers walk-in robes as the owners work in the fashion industry and required ample storage.



**SIGNATURE STYLE
KEY PIECES**

1 'Paros' vintage Indian clay pot, \$995, from Corabe. 2 1950s Italian brass mirror, \$2750, from The Vault Sydney. 3 'Barrett' small knurled sconce with shade, \$1190, from The Montauk Lighting Co. 4 *Figures in Landscape* artwork by Kevin Oxley, \$425, from Kate Nixon. 5 Perrin & Rowe 'Athenian' three-hole sink mixer with crossheads in Nickel, \$1515, from The English Tapware Company.